



EPR-1260 Service Instructions

I. Introduction

EPR-1260 is an electro-mechanically operated butterfly valve with integral position sensing. It is capable of traveling fully closed to fully open in 90 ms when operating at 12 V. The internals of the actuator are non-serviceable. External ancillary pieces such as SAE hose adaptors and seals can be replaced if damaged.

EPR-1260 is intended to operate with nominal supply pressures of 80 – 110 psig. Should the need arise to replace damaged external components, the accompanying exploded view is provided for sourcing replacements.

If you believe that your EPR-1260 has been damaged internally but, are unsure, it can be returned to the CAS Customer Service Department for evaluation.

Providing reasonable care and cleanliness standards are maintained, the valve should provide many years of trouble free operation.

II. Disassembly

1. Unscrew and remove the four ¼-20 Cap Screws that hold the SAE Hose Adaptors to the Actuator Housing. The Adaptor that the Cap Screws thread into should separate from the Actuator Housing when the screws are removed.
2. Slide the second Actuator Housing off of the snout of the Actuator Housing.
3. Clean components with a light solvent such as mineral spirits if required. Dry with compressed air.

Note: It is not recommended that you remove the black plastic cover from the actuator housing. If you do, extreme caution must be taken to ensure that you do not damage the contact brushes on the Actuators' main shaft.

III. Inspection

1. Examine O-Rings, Throttle blade and bore for debris or damage. Butterfly should be closed when Actuator is de-energized.
2. Rotate the Butterfly fully open with your fingers (it should be difficult to rotate as the Actuator employs a rather strong return spring).
3. Release the Butterfly. It should slam shut in approximately .1 second

III. Inspection Cont'd

4. Replace damaged or worn components. Refer to the accompanying exploded view for part number information.

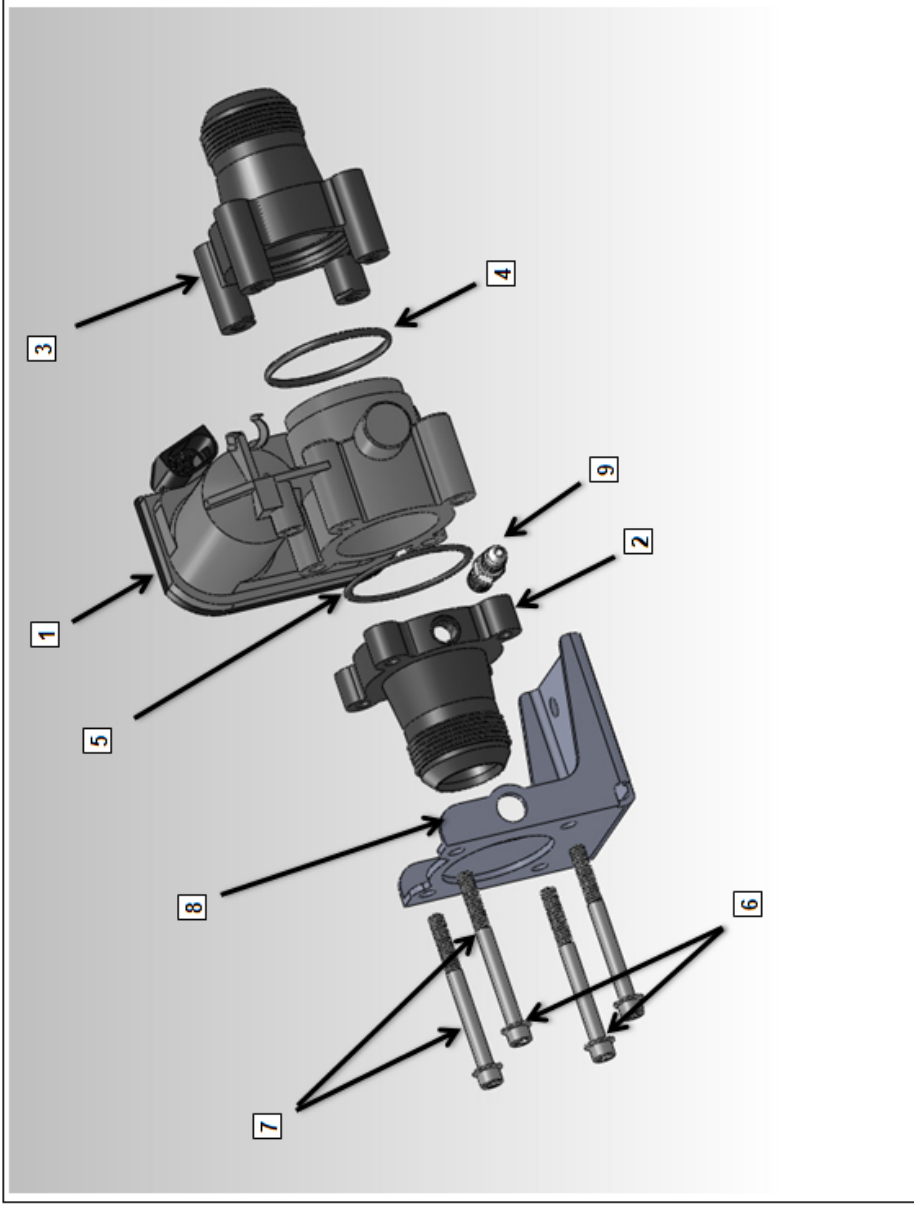
IV. Re-assembly

1. Install new O-rings in Adaptor Housings..
2. Slide the Adaptor with the internal O-Ring (EPR-1574-3-R) onto the snout of the Actuator.
3. Attach second Adaptor to Actuator/First Adaptor using ¼-in Cap Screws.
4. Torque Cap Screws to 80in lb..

CAS Service Documentation

EPR-1260

COMPRESSED AIR SUPERCHARGING



- 1 EPR-1260-S Actuator
- 2 EPR-1260-2-R Adaptor
- 3 EPR-1260-3-R Adaptor
- 4 SL-2-135-R O-Ring *
- 5 SL-2-136-R O-Ring *
- 6 FST-25-WSAE-R 1/4-in SAE Washer
- 7 FST-25-20-2.75CS-R Cap Screw
- 8 BRKT-EPR-1574-R
- 9 FIT-1-8NPT-PLG Fitting

* Available as Seal Kit SL-EPR-1260-S

DATE	Revision	Description	Comments
2/29/2016	A	Production Release	

Serviceable Components